

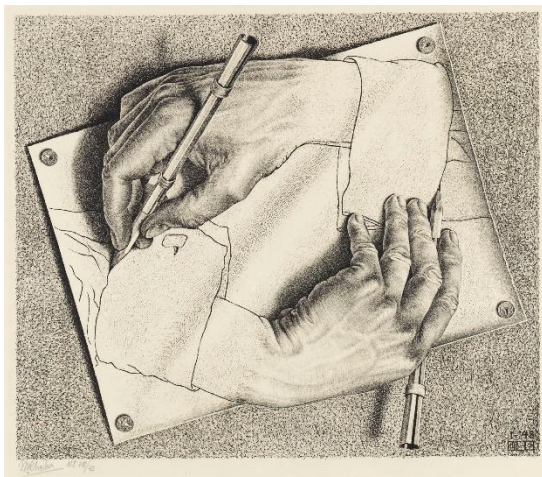
Escher in The Palace
Lange Voorhout 74
2514 EH Den Haag
T: +31 (0)70-4277730
info@escherinhetpaleis.nl



PRESS RELEASE

Prepare to be amazed by the works of M.C. Escher

Come to Escher in The Palace and discover Maurits Cornelis Escher (1898-1972), the artist who never lost his fascination with the wonderful world around him. The world-famous Dutch printmaker enthralls people young and old with his imaginative worlds in which illusion and amazement are put centre stage. With over 120 prints, the most famous works from his oeuvre can always be admired at Escher in The Palace. These magnificent prints are exhibited in a regal setting: the former winter palace of Queen Mother Emma.

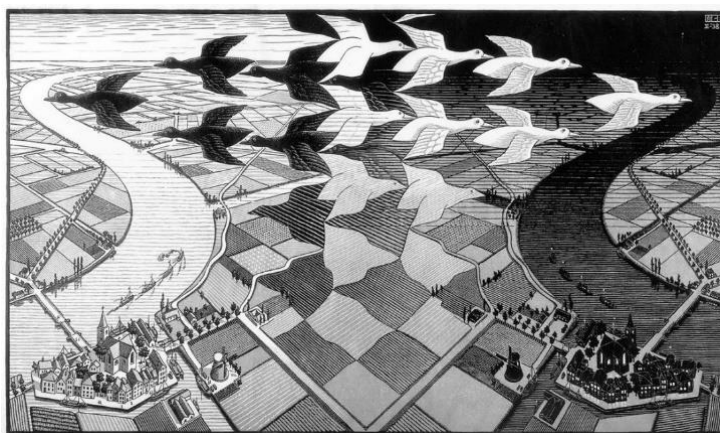


Escher's development as an artist is a key focus in museum Escher in The Palace. His early work consists of detailed woodcuts of people and unrivalled depictions of nature and landscapes. In his later work he develops his revolutionary tessellations, metamorphoses and optical illusions. His playful prints delight the eye and have been a rich source of inspiration for mathematicians, filmmakers and architects throughout the world for many years.

M.C. Escher, Drawing Hands, 1948, lithograph © The M.C. Escher Company – Baarn – Holland. All rights reserved. www.mcescher.com

Delve deep into Escher's history and discover the printmaker as a master of the metamorphosis, the king of illusion and a magician on paper.

Admire masterpieces like *Day and Night* (1938), in which Escher transforms a rural Dutch landscape into flying birds. Or the timeless print *Relativity* (1953), in which multiple realities seem to coexist and Escher defies gravity. And, of course, the jewel in the crown: the seven-metre-long *Metamorphosis III* (1967-1968), which represents the ultimate interpretation of Escher's key themes: eternity and infinity.



M.C. Escher, Day and Night, 1938, woodcut in black and grey, printed from two blocks © The M.C. Escher Company – Baarn – Holland. All rights reserved. www.mcescher.com

Experience the world of Escher

'Through Escher's Eyes', the interactive exhibition on the second floor of the museum, allows visitors to experience themes from Escher's work through touch, play and wonder. The visitor can make their own tessellation, step into an optical illusion and grow into a giant or shrink into a mini-human in a matter of seconds.



The museum also focuses on another art form that plays with the observer. Optical art (Op Art) tries to trick the eye by means of an optical illusion. The dynamic art form suggests movement through the combination of lines, colours and shadows. Victor Vasarely, Jesús Rafael Soto and Zero artist Otto Piene are some of the artists that can be admired on the second floor. A spectacular light installation by Otto Piene is on display here. Modern technology plays an important role in Piene's large spatial light sculptures.

Visiting a Royal Palace

Queen Mother Emma (1858-1934) lived and worked in this former palace from 1901 until she passed away. She also received her official guests and family here. After her death the palace was used by Queens Wilhelmina, Juliana and Beatrix. Over two centuries old, the palace is situated in historic The Hague's Museum Quarter on Lange Voorhout, one of the most beautiful avenues in the Netherlands. It is the only public building in The Hague where you can still experience the old royal palace atmosphere.

Parquet floor and chandeliers

The palace is lit by the spectacular chandeliers by Hans van Bentem. The designs are inspired by the work of Escher and various parts such as the globe, compass with measuring triangle and the bow can be found in the white stucco decoration of the 18th-century palace.



The ballroom. Photography: Isabel Nabuurs

The remarkable parquet floor was designed by the American minimal artist Donald Judd (1928-1994). Minimal artists are primarily American artists who created works of art around 1965 with simple industrial materials such as sheet metal, wood or plywood. Judd applied his principle of different colours and geometric patterns to the parquet floor in the Palace. He used five types of wood for this: ash, angelique, kambala, wenge and merbau. An iconic floor, on which the geometric pattern beautifully interacts with Escher's prints and the palace.

Note for editors:

If you would like to visit our museum or have any questions / comments, please feel free to get in touch with Marcel Westerdiep by sending an e-mail to mwesterdiep@escherinhetpaleis.nl or by calling +31 (0)70-4277730