

# ESCHER IN THE PALACE

## PREPARATION DOCUMENT

### PREPARING FOR THE MUSEUM VISIT

We're happy you're planning to come to the museum. This document will help you prepare for your visit. If you have any questions or suggestions about accessibility at the museum, please send an email to [info@escherinhetpaleis.nl](mailto:info@escherinhetpaleis.nl)

Our museum staff wish you a great visit.

### ABOUT ESCHER IN THE PALACE

Escher in The Palace exhibits the unique works of Maurits Cornelis Escher in a former royal palace.

In addition to Escher's artworks, there are sometimes temporary exhibitions by other artists running simultaneously. You can find more information about this on the website [www.escherinhetpaleis.nl](http://www.escherinhetpaleis.nl)

## CONTENTS

GENERAL INFORMATION	PAGE 2
THE BUILDING AND YOUR VISIT	PAGE 3
OTHER STIMULI	PAGE 9
EXTRA INFORMATION	PAGE 10

# GENERAL INFORMATION

**ADDRESS** Lange Voorhout 74  
2514 EH The Hague

**ROUTE** You can find information about accessibility by car, bike and public transport at the back of this document (under 'Extra information').

**CONTACT** Tel.: +31 70 4277730  
E-mail: [info@escherinhetpaleis.nl](mailto:info@escherinhetpaleis.nl)

## OPENING HOURS

The museum is open between 11:00 and 17:00 from Tuesday through Sunday. Opening times may sometimes change, due to public holidays, for example. You can find information about this through [Opening hours | Museum Escher in The Palace](#)  
The ticket counter closes at 16:30. The museum shop closes at 17:00.

## TICKETS

You need a ticket to visit the museum. They are for sale through this link: [Escher in The Palace tickets - Escher in The Palace](#), or at the ticket counter in the museum. You can pay for your ticket there either by card or cash.

## WHEELCHAIR USERS

The museum has a wheelchair ramp to enable wheelchair users to enter. It has a maximum load capacity of 250 kg. Electric wheelchairs are generally too heavy for this ramp.

All rooms in the palace are threshold-free and a small lift is available for use (84 cm deep, 103 cm wide, max. capacity 250 kg). Wheelchairs can be borrowed at the ticket counter. The borrowed wheelchairs fit in the lift but cannot be operated by the user themselves.

Unfortunately, the museum has no toilet facilities adapted for use by wheelchair users.

If you are intending to visit Escher in The Palace in a wheelchair, please let us know by email to [info@escherinhetpaleis.nl](mailto:info@escherinhetpaleis.nl) or phone +31 70-4277730.

We will then make sure that the wheelchair ramp is ready for use at the entrance and that a wheelchair is available for you to borrow if necessary. You can also phone the above number with any other questions you may have, or send us an email.



# THE BUILDING AND YOUR VISIT



The front of the museum. Photo: Gerrit Vermeulen

## ENTRANCE

Above, you can see the front of Escher in The Palace. That's also where the museum entrance is. It's indicated by the white arrow. While the museum is open, the doors are open. This is also where the ramp can be placed for wheelchair users.

## ENTRANCE HALL



Entrance hall

You come into this hall when you enter the museum. Here, you'll also find the counter where you can show your ticket or buy one.

The wheelchairs you can borrow are also here.



## CENTRAL HALL

You'll see two doors to the right of the ticket counter. They lead to the central hall. You can open the one on the right, which will take you into a high-ceilinged hall. There is a photo here of Queen Mother Emma. This building is her former winter palace.



The central hall

Here you'll find a number of hosts and/or hostesses waiting to welcome you. They will check your ticket and point out the stairs leading to the basement, which houses the cloakroom among other things.

You can also take the lift from here. Ask the hosts and hostesses to point it out to you. The lift is small and suitable for a maximum of 3 people, with a maximum weight of 250 kg.

## HOSTS AND HOSTESSES

Hosts and hostesses are present not only in the central hall, but on every floor. They can help you if you have any questions, and they are also there to make sure visitors comply with the house rules.

You'll recognise these staff members by the badge they wear, with 'host' or 'hostess' on it. The photo below shows you an example of such a badge.



## BASEMENT

Walk down the stairs and you arrive in the basement. You can also take the lift down. Here, you'll find the cloakroom, lockers and toilets. There are also roll containers that can be used for the coats and bags of visiting school classes.

The basement also contains a number of staff rooms, meeting rooms and the museum atelier.

Here you can see a few photos of the basement.



## CLOAKROOM AND LOCKERS

You can hang up your coat in the cloakroom. You are not permitted to take bags exceeding A4 size into the room with you, but you can store them in one of the lockers. You need a one euro coin to unlock the locker. You get it back when you open the locker on your return. The locker is closed with a key.



Cloakroom and lockers

If you don't have a one euro coin with you, you can borrow a plastic coin. Ask a host or hostess to help you with this.

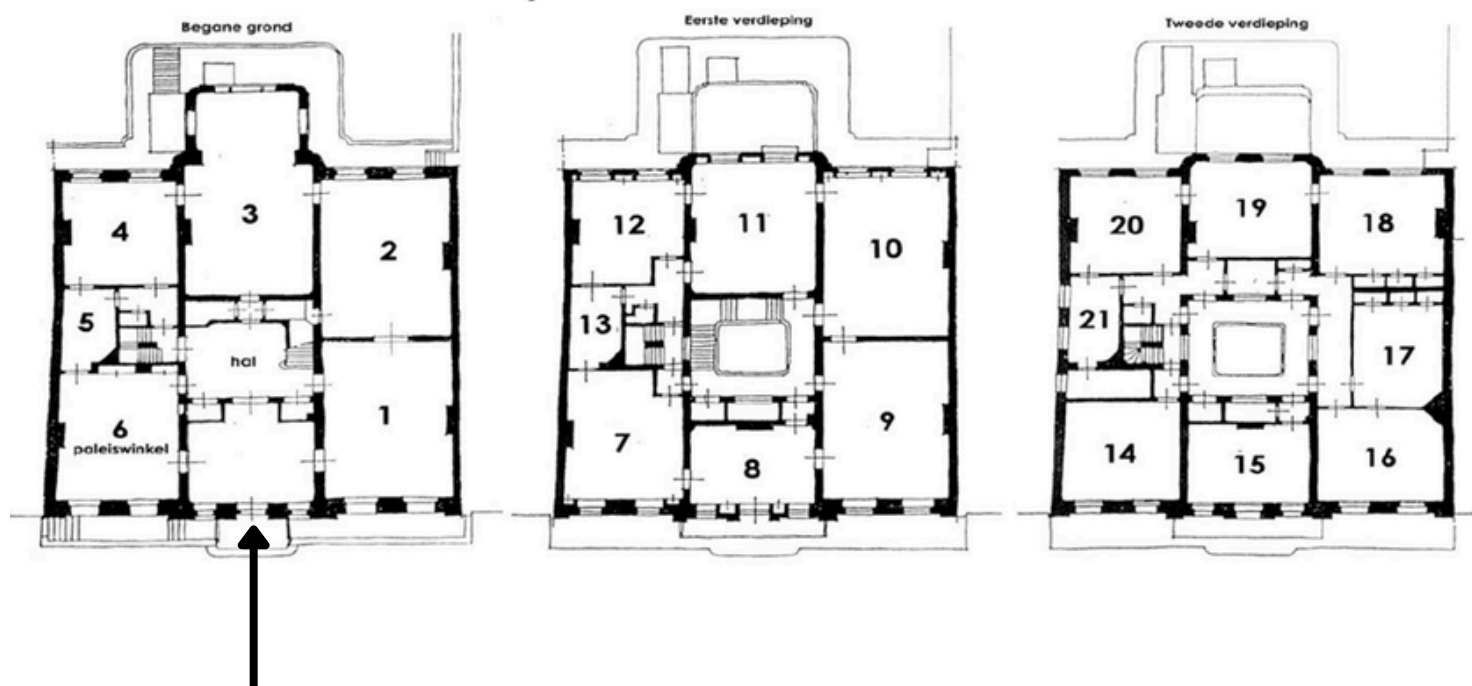
## TOILETS

The toilets are also in the basement, close to the cloakroom. They are indicated by signs. Unfortunately, there is no designated toilet for wheelchair users.



## MUSEUM ROUTE

Take the stairs or the lift back up to start your route through the museum. The hosts and hostesses can help you find your way. Below, you will also find the floor plans of the various floors.



Entrance and entrance hall

There are room numbers on the door posts in the museum.

## MUSEUM ROOMS

The museum is located in the former winter palace of Queen Mother Emma. That's clear from the decoration of the rooms. They often have wood carvings and gold leaf embellishments, mirrors and fireplaces. Sometimes there are murals or ceiling paintings too.

Artworks can become discoloured if there is too much light. To protect the artworks in the museum against daylight, the windows are screened in most rooms. The rooms are lit by electric spots and crystal chandeliers.



Zaal 3: de balzaal. Foto: Gerrit Vermeulen

## GROUND AND FIRST FLOORS

You will find M. C. Escher's artworks on the ground and first floors. Any temporary exhibition will also be found here. There are always artworks by M. C. Escher on show, even if there's a temporary exhibition at the same time.

To get from the ground floor to the first floor, you can take the large, regal staircase in the central hall. You'll recognise it by the red carpet. You can also take the lift.

## SECOND FLOOR

The second floor can be reached by way of the wooden staircase next to Room 7. This staircase gives access to all the floors of the palace.

On the second floor, there are screens and a number of objects that you're allowed to touch. For example there are a number of interactive objects which will teach you more about Escher's prints. In the film rooms, you'll learn more about Escher's life and work. You can draw your own tessellation on a screen, photograph yourself with a spherical mirror or be photographed in the Escher room where you look either gigantic or minute, thanks to optical illusion.

There's also an exhibition of Op art artworks. Room 19 has a light installation by artist Otto Piene. This room is closed off with black curtains.

Since there is much to see and experience, this floor is a particularly high-stimulus environment.

### INFORMATION

You'll find more information about the life and art of M. C. Escher on the information panels on the walls. From time to time there are also temporary exhibitions showing work by other artists. Information about them is also shown on the panels.

You can find out more about Queen Mother Emma and her palace on the screens in the rooms. On the right is an image of such a screen.





**Voorsalon** **Front Drawing Room**

De koninklijke vertrek werd de Voorsalon genoemd en werd door Koningin-Moeder Emma, de voormalige broederster van Paleis Lange Voorhout, gebruikt voor officiële ontvangsten. De wanden waren voorzien van een donkerrode zijden moiré wandbekleding en rijkelijk gedecoreerd met schilderijen van de koninklijke familie. De meubelen in de Voorsalon, afkomstig uit Huis Fagel, waren gemaakt van rozenhout en versierd met verguld brons.

Na Emmas overlijden in 1894 is het paleis een tijd gesloten geweest. Haar dochter Koningin Wilhelmina gebruikte de Voorsalon pas weer in 1945 voor de ontvangst van Generaal Eisenhower. Er zijn veel politieke leaders in dit vertrek op bezoek geweest. Chef-minister van Buitenlandse Zaken Norbert Schuurman herinnert het zich goed. In 1992 geeft hij tijdens een interview met het blad Vrij Nederland: "Paleis Lange Voorhout] ademde een prettige, gedistingeerde, ja, zeg maar ontspannen sfeer".

*This room was known as the Front Drawing Room. Queen Emma, the Queen Mother used it for official receptions. The walls were covered in dark red silk moiré and hung with paintings of the royal family. The furniture in the Front Drawing Room, from Huis Fagel, was made of rosewood and had bronze gilt decorations.*

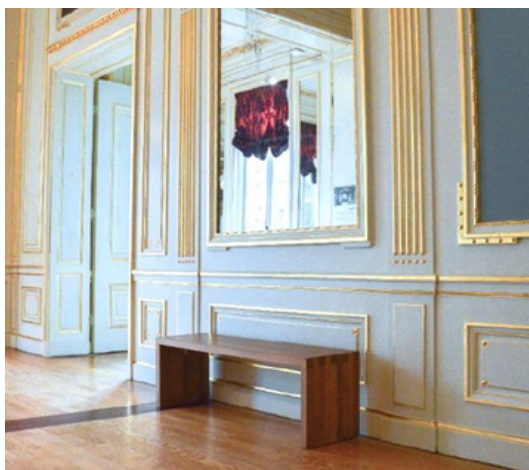
*After Emma's death in 1894 the palace was closed for a time. Her daughter Queen Wilhelmina did not use the Front Drawing Room again until 1945, when she met General Eisenhower here. Many political leaders visited this room. Former Minister of Foreign Affairs Norbert Schuurman remembered it well. During a 1992 interview with Vrij Nederland magazine, he said "[Lange Voorhout Palace] had a pleasant, distinguished, but relaxed atmosphere".*

### AUDIO TOUR

If you'd like to know more about the palace, or about Escher and his art, why not take an audio tour? To do so, you'll need to have headphones or ear buds and a mobile phone with you.

To listen to the audio tour, use your phone to scan one of the QR codes hanging in the basement and the central hall. Those will take you to a link for the audio tour.

### HAVE A SEAT AND REST



There are one or more benches in many of the museum rooms, where you can have a seat and rest for a while. The photo below shows you an example of such a bench.

If you'd like to sit more often while you study the artworks, ask the hosts and hostesses in the central hall for a museum chair. You can take that folding chair into the museum with you.

Unfortunately, there is no separate quiet space.



## MUSEUM SHOP

There is a museum shop in the palace: Paleiswinkel. You'll find it on the ground floor, immediately to the left of the central hall. There are cards, posters, mugs and other Escher-related items on sale there. With so many different items, the shop is high-stimulus.



9

the museum shop

Walking back from Room 5 to the central hall, you go through the museum shop. The route takes you by way of a path at the side of the shop, so you can avoid the middle. You can also choose to walk back through the rooms you have already visited.

The museum shop is open from Tuesday through Sunday from 11:00 to 17:00 and accessible even if you're not visiting the museum itself. Just mention at the ticket desk that you only want to go to the museum shop

## END OF YOUR VISIT

When you've finished viewing the art and wish to leave the museum, you can pick up your coat and/or bag in the basement. You then leave the palace using the same door you entered through.

# OTHER STIMULI

## SMELLS

Restorations take place in the museum now and then. Woodwork may be being varnished in a room, for example, or new gold leaf being applied to the stairway. We do our best to carry out such restorations with the least possible nuisance for visitors. In such cases, there may temporarily be a smell of paint in a room.

## SCHOOL CLASSES AND GROUPS

Museum lessons, guided tours and workshops are regularly given to children and adults in the museum. A guided tour or lesson is given by a museum guide or teacher. They sometimes use teaching materials such as large puzzle pieces or a fabric rug to sit on.

There are also school classes that visit the museum on their own. In that case, the teacher and pupils have been informed of the museum house rules.



The museum guides and teachers do their best not to disturb others. But if you are bothered by a group or would like to know when the museum is quieter, don't hesitate to speak to a host or hostess about it.

### **BUSY DAYS**

It's not always possible to predict which days are busy at the museum. Generally speaking, weekends are busier than weekdays and there are often many visitors on school holidays.

## **EXTRA INFORMATION**

### **MUSEUM HOUSE RULES**

A number of museum house rules have been established to protect the artworks and the palace and to allow museum visits to be as pleasant as possible for everyone.. We ask that you comply with them during your museum visit.

- RULE 1** You may not touch the artworks on display unless it specifically says you may. The artworks are sometimes on a pedestal or platform - you may not stand or sit on it.
- RULE 2** Please keep 50 cm from the artworks and museum walls and do not lean on the glass display cabinets.
- RULE 3** Photographing is permitted, but the use of a tripod, selfie stick or flash is not.
- RULE 4** Umbrellas and bags larger than A4 are not allowed in the museum. They can be stored in the cloakroom or in one of the lockers.
- RULE 5** Eating and drinking is not permitted in the museum. If there are medical reasons that make this necessary, please ask a host or hostess where you may do so.
- RULE 6** You may not bring pets with you but assistance dogs are very welcome!

## ROUTE

Escher in The Palace is situated on Lange Voorhout 74, 2514 EH in The Hague. You can reach it by car, public transport, bike or on foot.

Below is a description of the easiest way to reach the museum if you come by tram. It's a walk of roughly three minutes from the tram stop to the museum - see the route below.

If you're coming by bike, you'll find bike parking racks on the square in front of the museum. There's also free bike parking nearby - the Biesieklette. It's situated at Denneweg 128 and open from 07:30 to 01:30.



You can reach us by car by way of the Utrechtsebaan - follow signs for 'Centrum'. There is parking space in the Museumkwartier and Helicon multi-storey carparks.

Inexpensive parking can be found through the ParkBee website, at 'ParkBee Staybridge Suites The Hague' (4-minute walk) and 'ParkBee Haagsche Hof' (8-minute walk).

Use the `ESCHERINHETPALEIS20` discount code to get 20% off.

## LASTLY

We hope this handbook will prepare you well for your visit to the Escher in The Palace museum. If you have any questions about or suggestions for the museum's accessibility, please email them to [info@escherinhetpaleis.nl](mailto:info@escherinhetpaleis.nl).